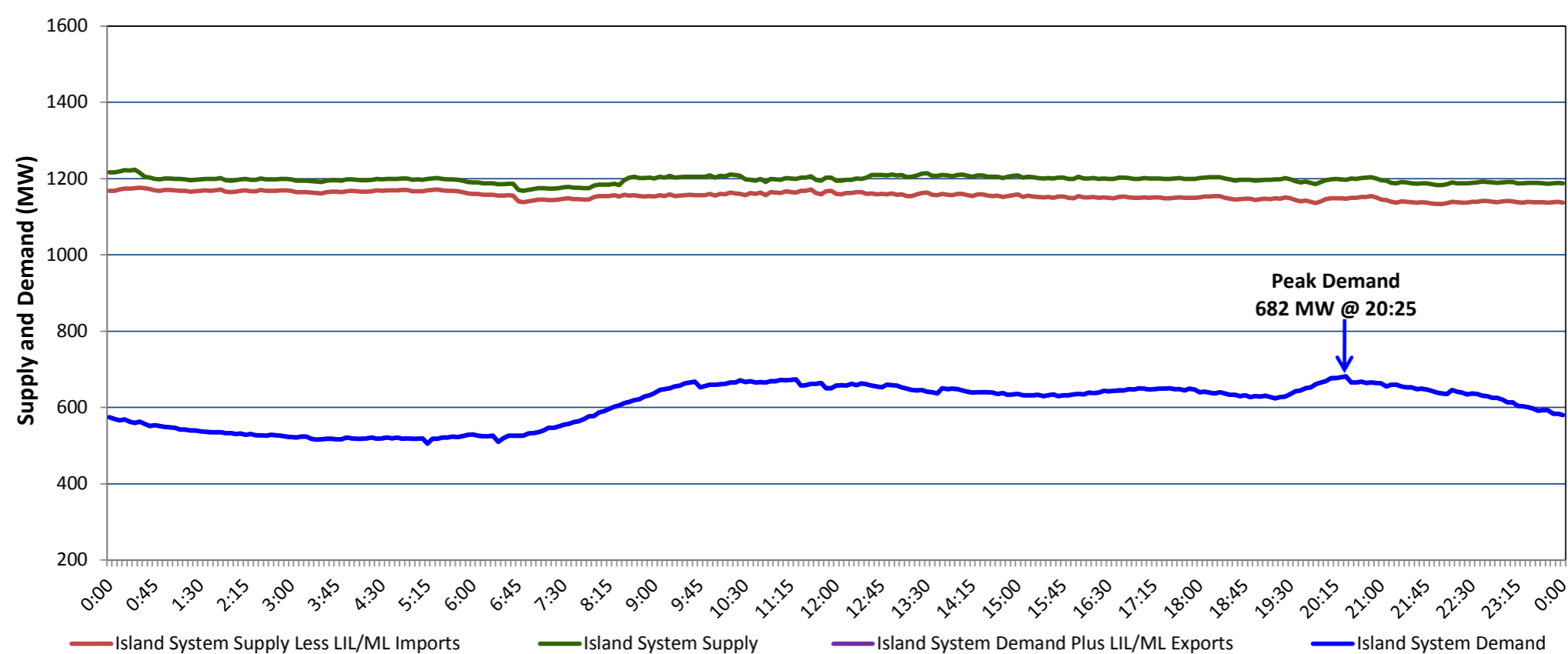


**Newfoundland Labrador Hydro (NLH)
Supply and Demand Status Report Filed Tuesday, September 03, 2019**

**Section 1
Island Interconnected System Supply, Demand & Exports
Actual 24 Hour System Performance For Sunday, September 01, 2019**



Supply Notes For September 01, 2019

- A As of 1303 hours, May 26, 2019, Bay d'Espoir Unit 7 unavailable due to planned outage (153.4 MW).
- B As of 0800 hours, July 29, 2019, Holyrood Unit 1 unavailable due to planned outage (170 MW).
- C As of 1150 hours, August 18, 2019, Hinds Lake Unit unavailable due to planned outage (75 MW).
- D As of 1800 hours, August 22, 2019, Holyrood Unit 3 available but offline for economic dispatch (150 MW).
- E As of 2308 hours, August 24, 2019, Bay d'Espoir Unit 6 unavailable (76.5 MW).
- F As of 1300 hours, August 28, 2019, Stephenville Gas Turbine available at 25 MW (50 MW).
- G **At 0757 hours, September 01, 2019, Holyrood Unit 2 available but offline for economic dispatch (170 MW).**

**Section 2
Island Interconnected Supply and Demand**

Mon, Sep 02, 2019	Island System Outlook ³		Seven-Day Forecast	Temperature (°C)		Island System Daily Peak Demand (MW)	
				Morning	Evening	Forecast	Adjusted ⁷
Available Island System Supply: ⁵	1,180	MW	Monday, September 02, 2019	13	14	755	755
NLH Island Generation: ⁴	870	MW	Tuesday, September 03, 2019	14	15	805	805
NLH Island Power Purchases: ⁶	70	MW	Wednesday, September 04, 2019	17	19	780	780
Other Island Generation:	190	MW	Thursday, September 05, 2019	18	19	810	810
ML/LIL Imports:	50	MW	Friday, September 06, 2019	13	13	815	815
Current St. John's Temperature & Windchill:	13 °C	N/A °C	Saturday, September 07, 2019	14	14	790	790
7-Day Island Peak Demand Forecast:	845	MW	Sunday, September 08, 2019	16	16	845	845

Supply Notes For September 02, 2019

- Notes:
1. Generation outages for running and corrective maintenance are included. These are not unusual for power system operations. They generally do not impact customer supply. The power system operators schedule outages to system equipment whenever possible to coincide with periods when customer demands are low and sufficient supply reserves are available. However, from time to time equipment outages are necessary and reserves may be impacted.
 2. Due to the Island system having no synchronous connections to the larger North American grid, when there is a sudden loss of large generating units there may be a requirement for some customer's load to be interrupted for short periods to bring generation output equal to customer demand. This automatic action of power system protection, referred to as under frequency load shedding (UFLS), is necessary to ensure the integrity and reliability of system equipment. Under frequency events have typically occurred 5 to 8 times per year on the Island Interconnected System and the resultant customer load interruptions are generally less than 30 minutes. With the activation of the Maritime Link frequency controller during the winter of 2018, UFLS events have occurred less frequently.
 3. As of 0800 Hours.
 4. Gross output including station service at Holyrood (24.5 MW) and improved NLH hydraulic output due to water levels (35 MW).
 5. Gross output from all Island sources (including Note 4).
 6. NLH Island Power Purchases include: CBPP Co-Gen, Nalcor Exploits, Rattle Brook, Star Lake, Wind Generation and capacity assistance (when applicable).
 7. Adjusted for curtailable load, market activities and the impact of voltage reduction when applicable.

**Section 3
Island Peak Demand Information
Previous Day Actual Peak and Current Day Forecast Peak**

Sun, Sep 01, 2019	Actual Island Peak Demand ⁸	20:25	682 MW
Mon, Sep 02, 2019	Forecast Island Peak Demand		755 MW

Notes: 8. Island Demand / LIL / ML Exports (where applicable) is supplied by NLH generation and purchases, plus generation owned and operated by Newfoundland Power and Corner Brook Pulp & Paper (Deer Lake Power, DLP).